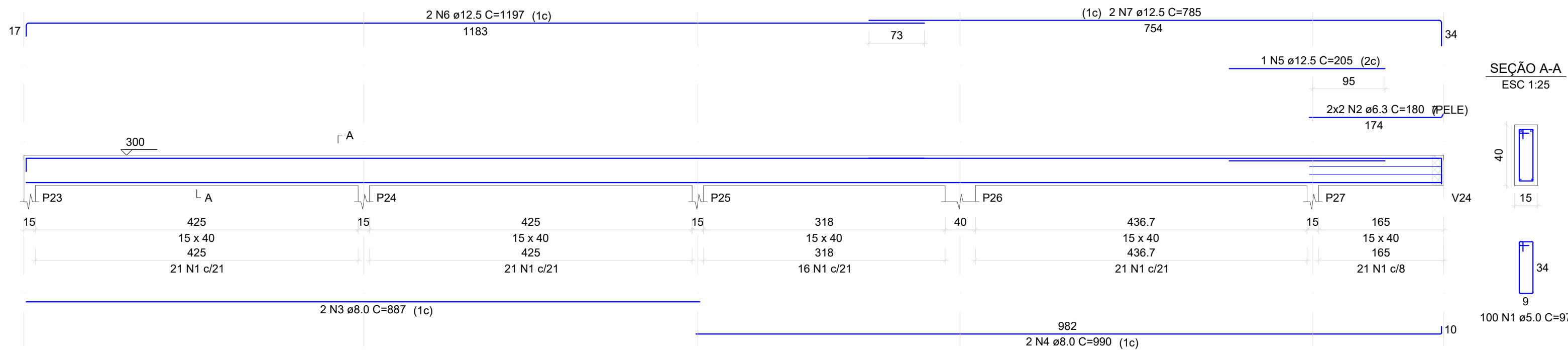


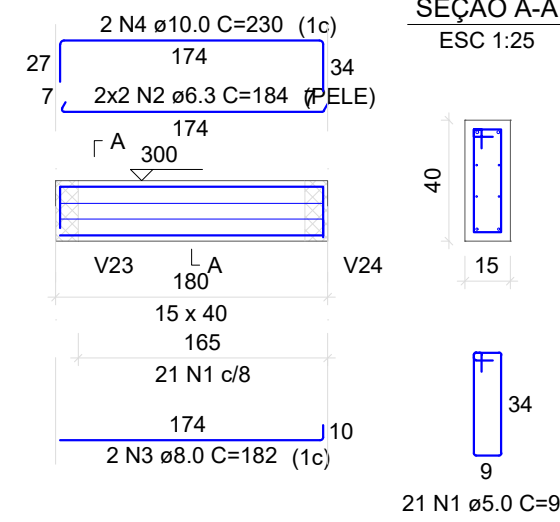
V10

ESC 1:50



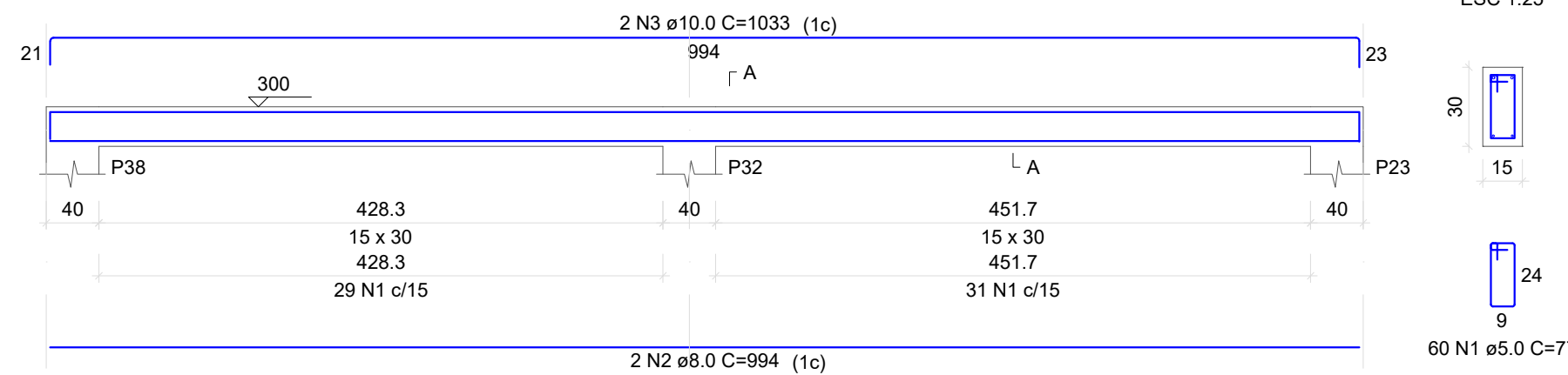
V11

ESC 1:50



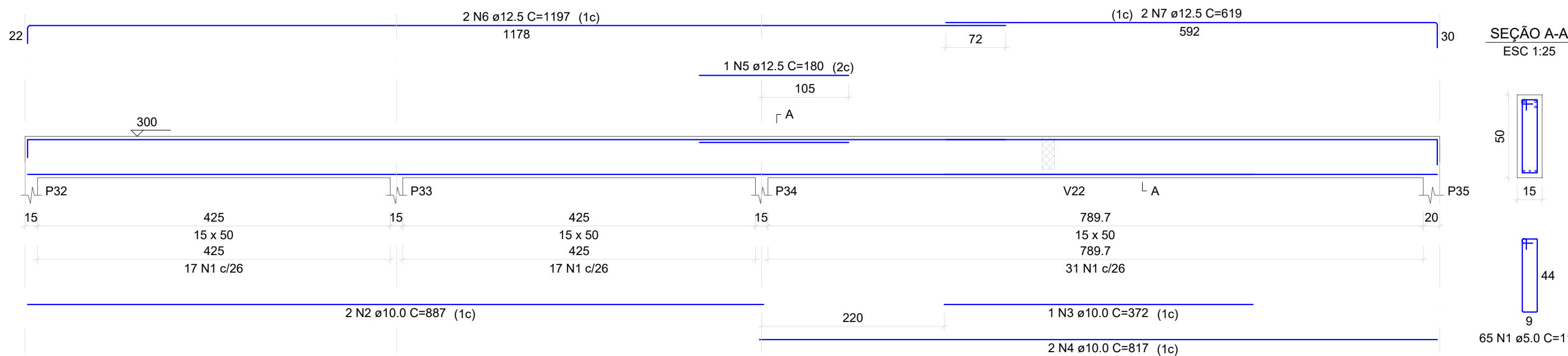
V16

ESC 1:50



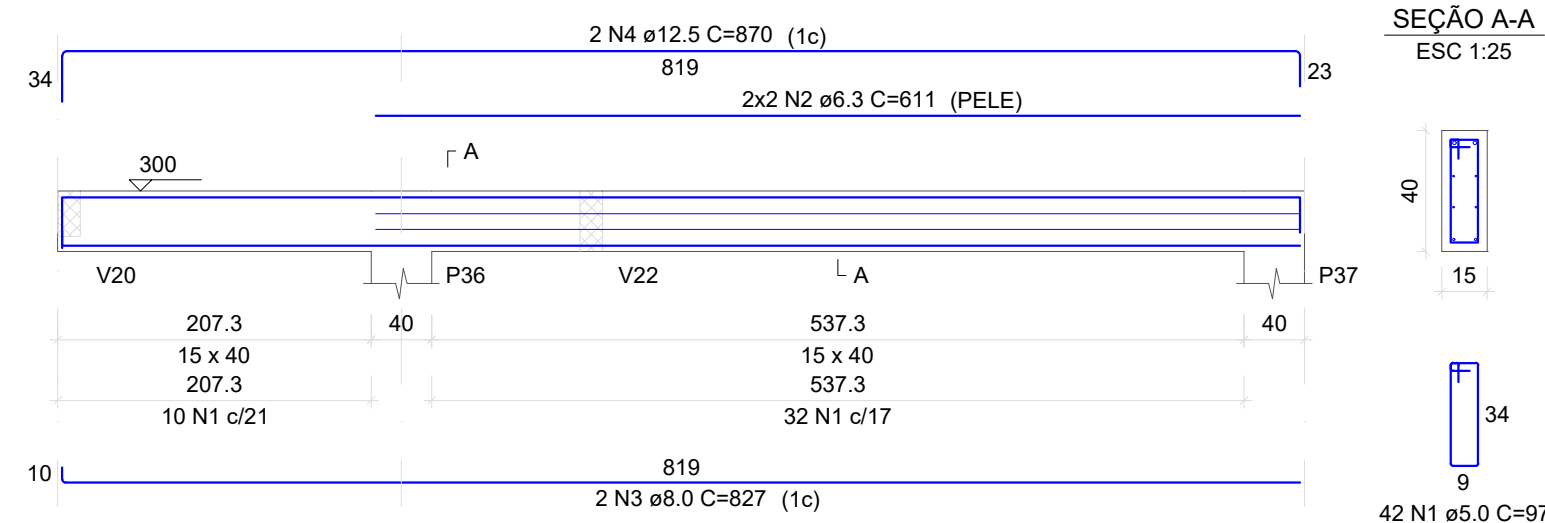
V13

ESC 1:50



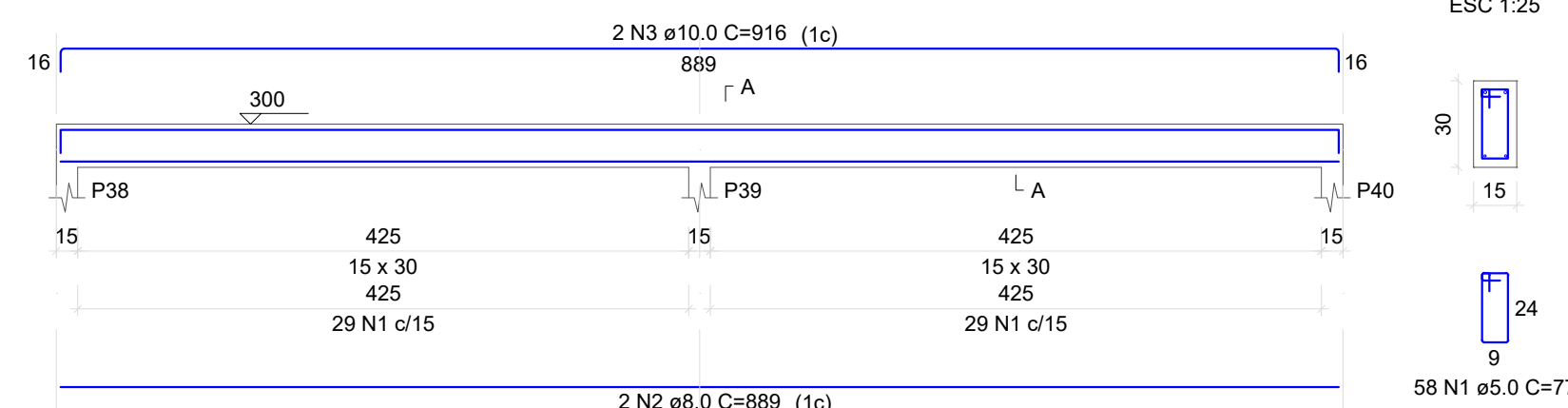
V14

ESC 1:50



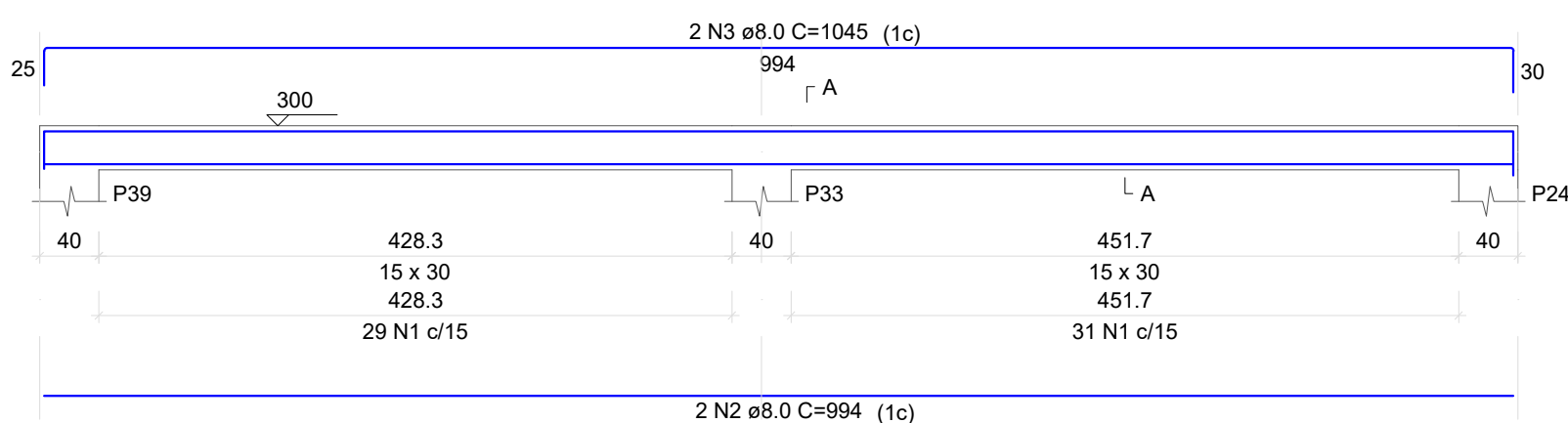
V15

ESC 1:50



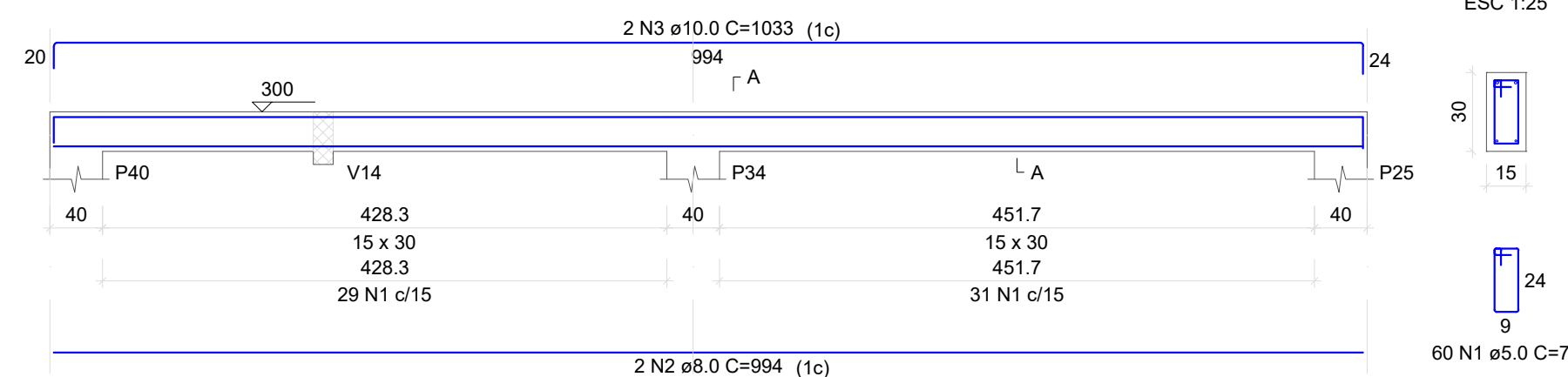
V18

ESC 1:50



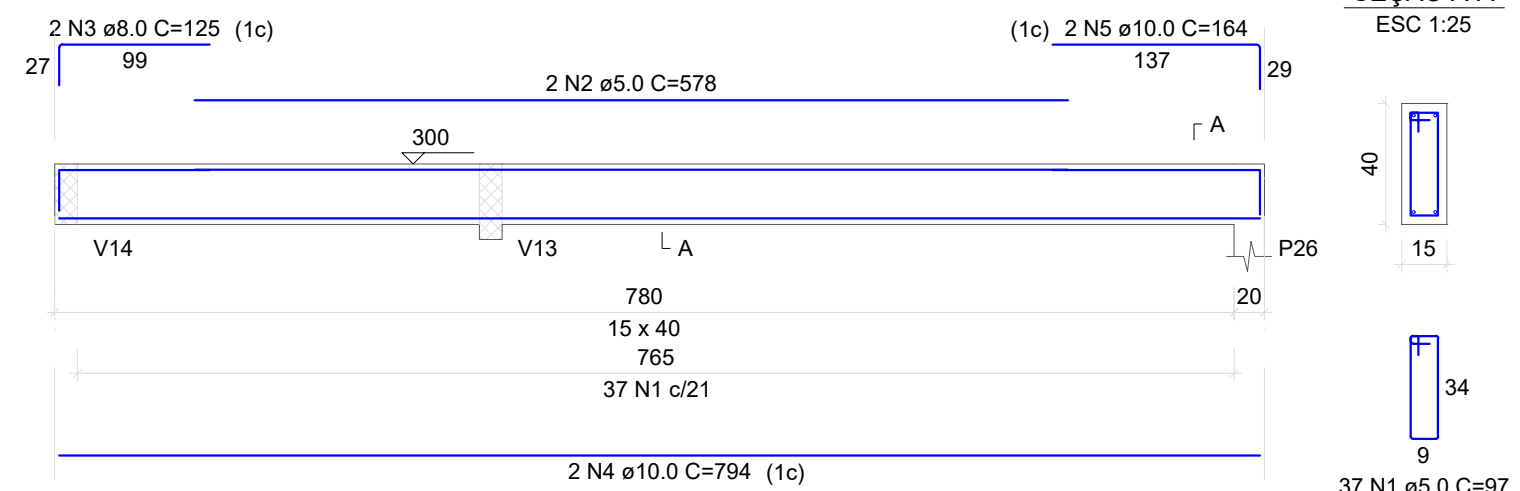
V20

ESC 1:50



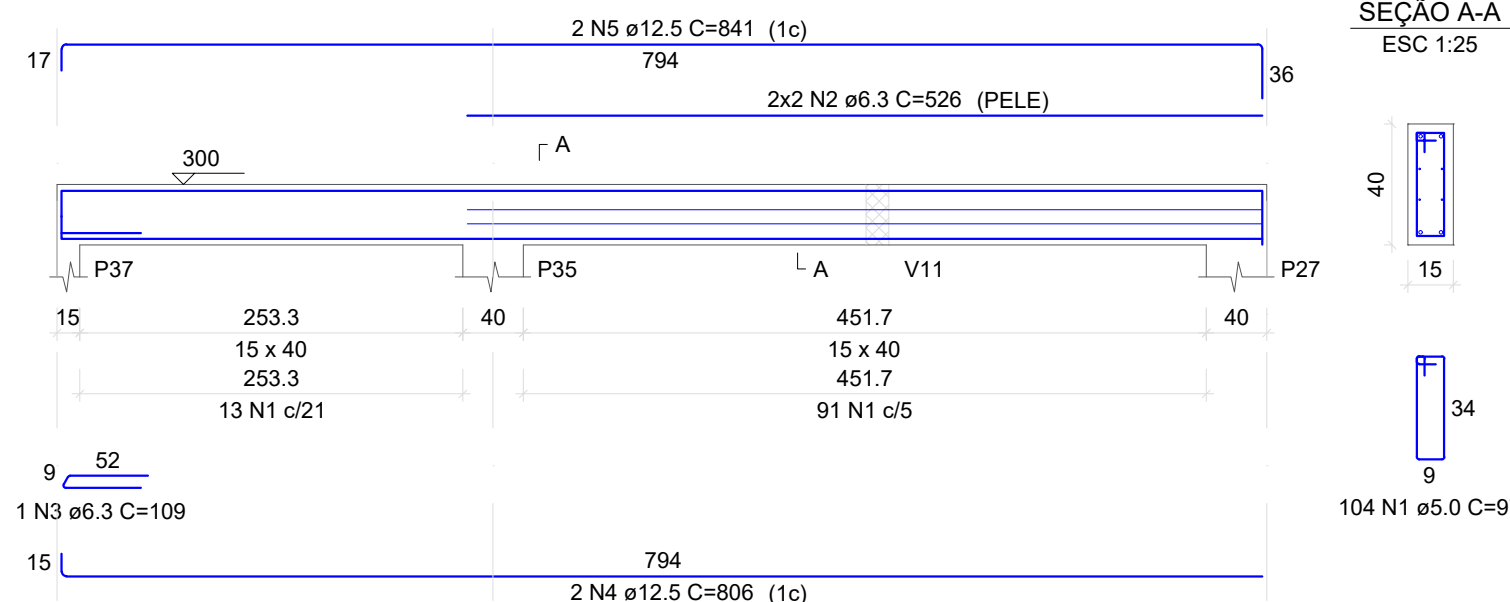
V22

ESC 1:50



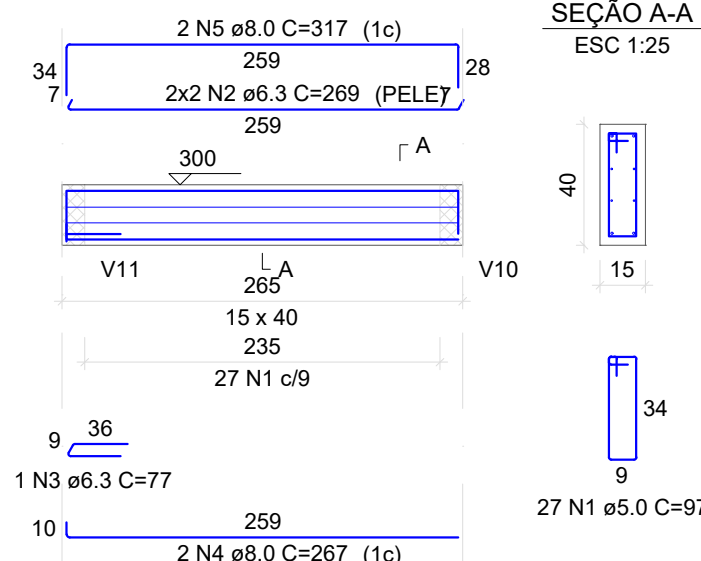
V23

ESC 1:50



V24

ESC 1:50



15 | VIGAS COBERTURA

ESCALA 1:50

ESTRUTURAL



ESTADO DE SANTA CATARINA
PREFEITURA MUNICIPAL DE GUATAMBU
DEPARTAMENTO DE ENGENHARIA
RUA MANOEL ROLIM DE MOURA | 825 | CENTRO - CEP 89817-000 - GUATAMBU | SC
FONE/FAX: (49) 3336-0102 - engenharia@guatambu.sc.gov.br

DESCRIÇÃO DA OBRA:

AMPLIAÇÃO - CEIM DI FIORI - ETAPA 01

RESPONSÁVEIS:

PREFEITURA MUNICIPAL DA GUATAMBU
CNPJ: 95.990.206/0001-12
PREFEITO MUNICIPAL

ROBERTO DE CARLI DE MARTINI
RESPONSÁVEL TÉCNICO
ENGENHEIRO CIVIL
CREA/SC - 196.890-6

ESPECIFICAÇÕES:

■ ARMADURA VIGAS DE COBERTURA

PRANCHA:

11
14

PRANCHA:

A1

ESCALA:

INDICADA

DATA:

22.07.2025

NOME DO ARQUIVO:

DESENHO:

ROBERTO